



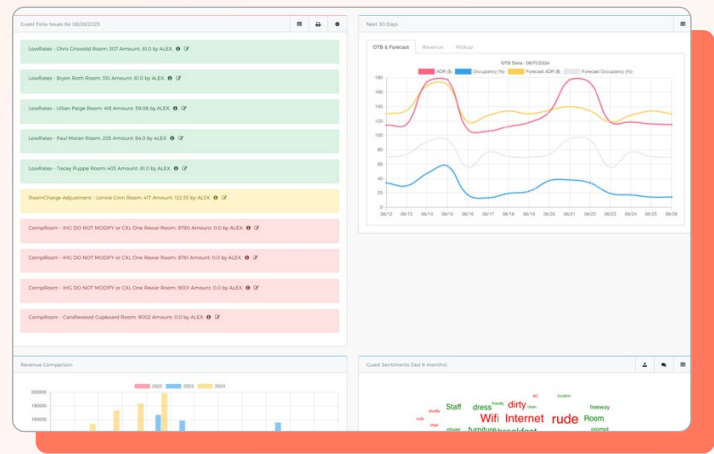
OpsPack

Quickly Turn Hotel Data into Decisions

Otelier's OpsPack helps hotel teams uncover actionable insights hidden in their operational, financial, and guest experience data. Whether you're looking to boost margins, fine-tune pricing strategies, or reduce inefficiencies, our operational reporting delivers the foundational tools to help you make faster, smarter business decisions portfolio-wide.

[Learn More](#)

Name	Rooms Occupied	Room Revenue	FNB Revenue	Other Revenue
Demo Hotel 1	129	\$17,028.23	\$28.00	\$1,412.20
Demo Hotel 2	101	\$9,933.22	\$0.00	\$50.00
Demo Hotel 3	75	\$10,294.14	\$173.00	\$0.00
Demo Hotel 4	121	\$22,338.66	\$0.00	\$501.45
Demo Hotel 5	69	\$7,242.82	\$0.00	\$15.00
Demo Hotel 6	54	\$6,291.48	\$0.00	\$0.00
Demo Hotel 7	56	\$5,502.06	\$78.70	\$47.30
Demo Hotel 8	87	\$9,837.86	\$965.59	\$99.37
Demo Hotel 9	68	\$8,522.90	\$52.00	\$0.00
Demo Hotel 10	92	\$12,210.57	\$47.63	\$0.00
Demo Hotel 11	92	\$9,852.52	\$270.70	-\$83.00
Demo Hotel 12	58	\$5,248.99	\$64.16	\$50.00
Demo Hotel 13	170	\$16,020.76	\$66.00	\$116.70



Gain Visibility into Performance

Track the KPIs that matter most with easy-to-use hotel snapshots that consolidate operational, financial, and guest satisfaction metrics. Get quick views of portfolio-wide performance or property-level daily flash reports—all without manual data wrangling.

Move from Reactive to Proactive

Spot trends early and take action. Automate your reporting schedule and compare STR, labor, and P&L metrics side by side. Operational reporting helps critical insights stand out—so you can act fast and with confidence.

“GMs are often spending three-plus hours per day on admin. With Otelier’s operational insights, you can literally cut that time down to less than an hour, or more than 50 percent for sure.”

- Prince Singh, Chief Operating Officer, Five Rivers Hospitality

Key Features

Base Module

Hotel Snapshot Dashboard	Get a clear, hotel-level view of performance powered by PMS, POS, STR, and GL data. Track KPIs like ADR, RevPAR, occupancy, and pickup trends in one place.
Portfolio Overview	Spot portfolio-wide patterns and outliers across all properties with consolidated data and visual dashboards.
On-the-Books (OTB) Dashboard	View your upcoming revenue outlook and compare it against last year, same time last year, or budget to make proactive decisions.
Scheduled Reports	Automate recurring performance updates to key stakeholders with fully customizable delivery settings.

Add-On Modules

⊕ Labor Analytics	Break down labor costs by department or employee. Optimize staffing with KPIs like LCOR, LCPAR, and labor cost as a percentage of revenue.
⊕ P&L Performance Analytics	Analyze revenue, expenses, and margins with advanced financial metrics like EBITDA variance, CPOR, and net income trends.
⊕ Guest Sentiment Survey (GSS) Analytics	Monitor guest experience trends with survey-based KPIs like NPS, Overall Satisfaction, Cleanliness, Internet Quality, Staff Helpfulness, and Check-in/Check-out Speed.
⊕ Benchmarking	Bring in your competitive benchmarking data and compare your hotels against main indexes of performance

Unlock the Power Behind Your Property Data

See how Otelier's reporting tools can help you unlock insights and drive smarter decisions across your portfolio.

[Get a demo](#)